

ENERVEX® PLX PLENUM BOX

3912004 03.16

Product Information

Use

PLX Plenum Boxes are used when installing multiple chimney fans on the top of a single or double wall steel chimneys. When modified, they can also be adapted to masonry chimneys.

Description

The plenum box has a collar that is designed to slide into the steel chimney for a tight fit. The box itself must be supported due to the weight.

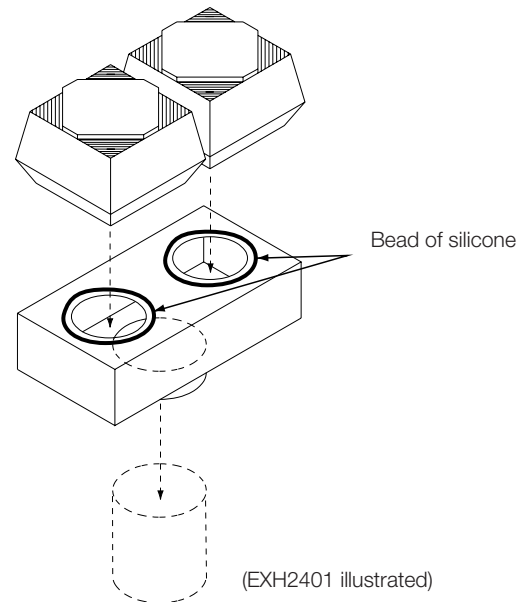
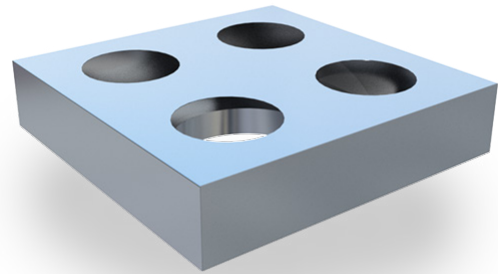
Specifications are shown on the back. Chimney inside diameter must be specified when ordering.

Material

Standard plenum boxes are made of 14 GA 316L stainless steel. Custom plenum boxes are available.

Warranty

2-Year Factory Warranty. Complete warranty conditions are available from ENERVEX Inc.



Specifications are subject to change without notice.

ENERVEX Inc.
1685 Bluegrass Lakes Parkway
Alpharetta, GA 30004
USA

P: 770.587.3238
F: 770.587.4731
T: 800.255.2923
info@enervex.com
www.enervex.com

ENERVEX®
VENTING DESIGN SOLUTIONS



ENERVEX® PLX PLENUM BOX

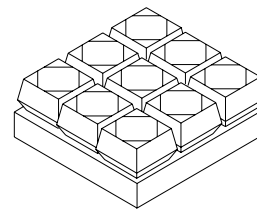
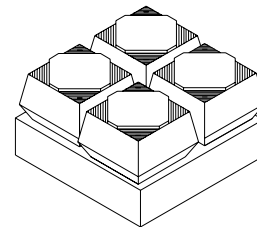
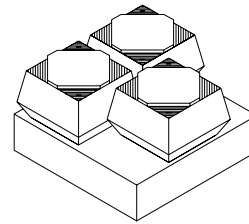
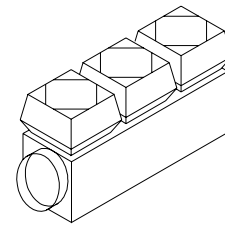
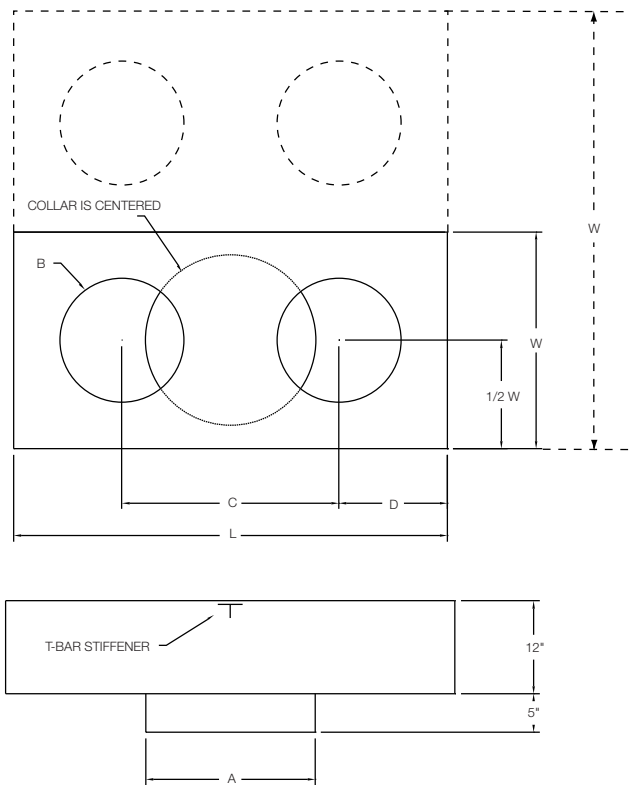
3932004 03.16

Product Information

Specifications

Fan System	Item Number	"A" Max. Flue Dia. *	"B" Hole Dia.	"C" Dim. Centerline	"D" Dim. from end	"L" Dim. Length	"W" Dim. Width	Approx. Weight
2 x RSV 315	EXH2302	24"	(2) 14"	25"	10 1/2"	46"	24"	100 lbs.
2 x RSV 400/450	EXH2402	28"	(2) 16"	28"	14"	56"	34"	150 lbs.
3 x RSV 400/450	EXH2403	56"	(3) 16"	28"	14"	56"	56"	250 lbs.
4 x RSV 400/450	EXH2404	56"	(4) 16"	28"	14"	56"	56"	250 lbs.
5 x RSV 400/450	EXH2405	56"	(5) 16"	28"	14"	84"	56"	350 lbs.
6 x RSV 400/450	EXH2406	56"	(6) 16"	28"	14"	84"	56"	350 lbs.

* Chimney inside diameter must be specified when ordering.



Specifications are subject to change without notice.

ENERVEX Inc.
1685 Bluegrass Lakes Parkway
Alpharetta, GA 30004
USA

P: 770.587.3238
F: 770.587.4731
T: 800.255.2923
info@enervex.com
www.enervex.com

ENERVEX®
VENTING DESIGN SOLUTIONS