

ENERVEX® BEF 315-800x BOX VENTILATOR

020.1210.0619 08.19

Product Overview

Use

The BEF is designed to provide movement of air in exhaust and air supply systems. Suitable uses include comfort ventilation, make-up air for laundry and mechanical rooms, and exhaust and air supply in kitchens/bathrooms/laundries in multi-story, multi-family buildings. It can be installed indoors as well as outdoors

Description

The BEF box ventilator is a high performing exhaust fan with a no-scroll housing design with inlet outlet connections on the same centerline. The design of the inlet and discharge areas assure minimum lint build-up.

The housing's double-wall design completely insulates against fire, noise, condensation and heat with 2" fiberglass insulation. The motor and impeller are mounted on a hinged door to provide easy access for service and cleaning.

The housing design allows the ventilator to be oriented in multiple positions, curb-mountable, inline, standing on a flat surface or suspended from a ceiling.

The fan is designed to exhaust lint-laden air from single or multiple Type I and Type II residential and commercial clothes dryers. The ventilator cannot be used for transport of large particles.

The box ventilator can operate with exhaust temperatures within 10°F (-12°C) and 400°F (200°C), and at ambient temperatures within -20°F (-30°C) and 120°F (50°C).

Meets US Department of Energy 2016 Motor Efficiency Requirements.

Material

The ventilator housing is galvanized steel while the impeller is welded aluminum. The aluminum impeller is statically and dynamically balanced with permanently attached balancing weights.

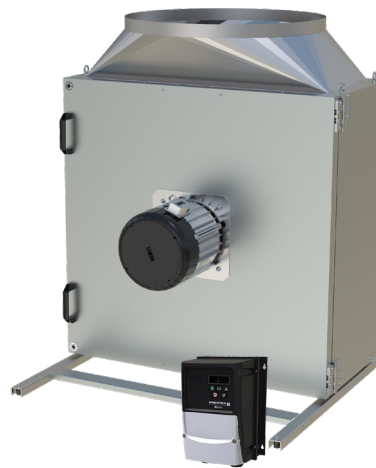
Motor

The IE5 rated motor is a TEFC, maintenance-free variable speed permanent magnet motor with pre-lubricated and sealed ball bearings and a Class H temperature rating. The motor with controller is rated at 92% efficiency and able to operate as low as 50 RPM. It has integrated protection against overloading, blocking over and under voltage and over-heating. The motor shaft is internally isolated to eliminate the need for external shaft grounding. It is rated for outdoor installation.



ENERVEX Inc.
1685 Bluegrass Lakes Parkway
Alpharetta, GA 30004
USA

P: 770.587.3238
F: 770.587.4731
T: 800.255.2923
info@enervex.com
www.enervex.com



The included EDrive motor control (NEMA4X) is factory programmed by ENERVEX for optimal operation of the ventilator.

Standard Equipment

- Support legs with vibration dampers
- 4" x 4" Junction box with cover and conduit
- EDrive Motor Controller

Optional Accessories

- MEC 24 Modulating Exhaust Control
- EBC 24 Modulating Pressure Controller
- EBC 30/31 Modulating Pressure Controller

Listings

The BEF Box Ventilator is UL Listed in the U.S. and certified for Canada under Underwriters Laboratories Inc. file no. E479840:

- UL 705 Standard for Power Ventilators, Edition 6 - Revision Date 2013/12/17. With special consideration for venting lint-laden air from single or multiple dryers
- CSA C22.2 NO. 113-12 Fans and Ventilators Edition 9 - Revision Date 2012/10/01

Complies with and meets Type B, Spark Resistant Construction per AMCA standard 99-0401 classifications of Spark Resistant Construction.

Warranty

2-Year Factory Warranty. Complete warranty conditions are available from ENERVEX Inc.

ENERVEX®
VENTING DESIGN SOLUTIONS

ENERVEX® BEF 315-800x BOX VENTILATOR

020.1210.0619 08.19

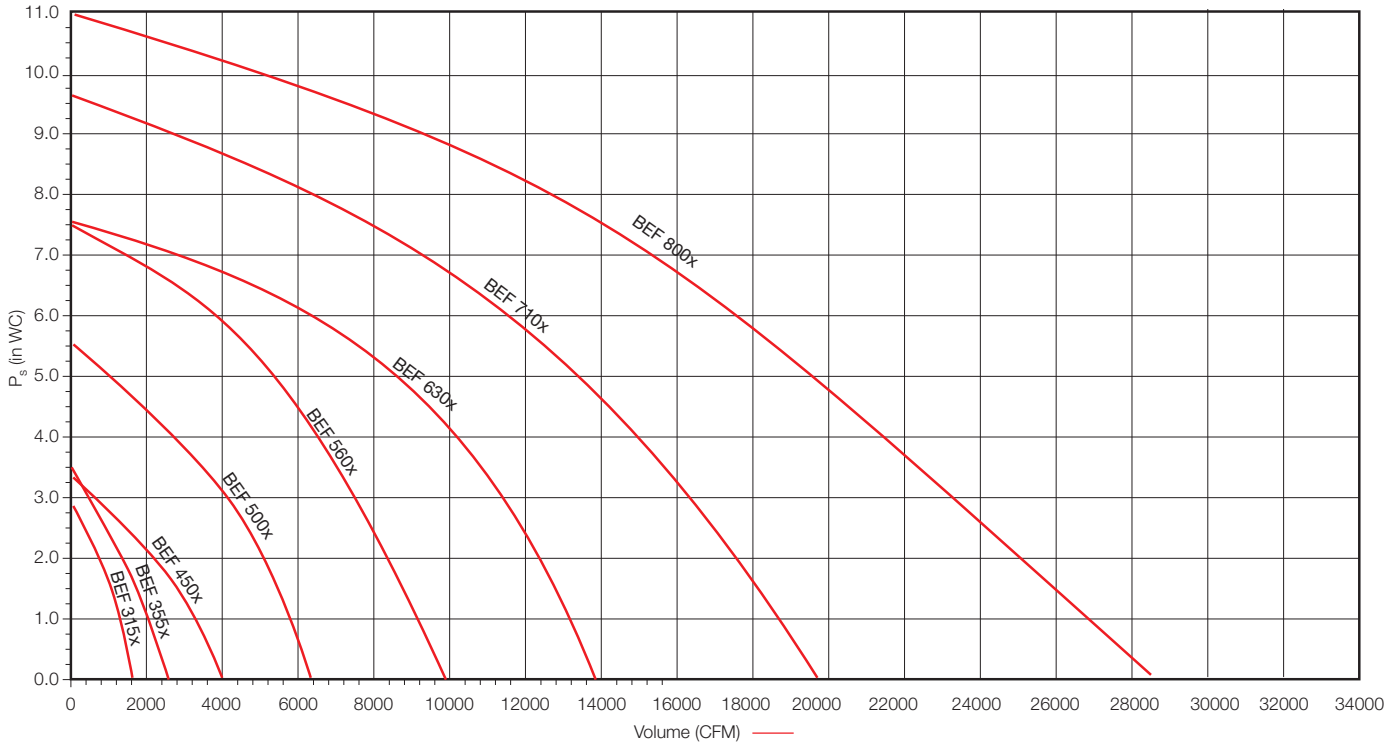
Product Overview

Specifications

	BEF 315x	BEF 355x	BEF 450x	BEF 500x	BEF 560x	BEF 630x	BEF 710x	BEF 800x
Fan Type	Centrifugal							
Motor	EC - motor							
Voltage Configuration	1x120 / 3x240 V	1x120 / 3x240V	3x240 / 3x480V	3x240 / 3x480V	3x240 / 3x480V	3x240 / 3x480V	3x480V	3x480V
Motor Rating	NEMA 3R / IP54							
Max Speed	2100 RPM	1950 RPM	1750 RPM	1750 RPM	1850 RPM	1750 RPM	1750 RPM	1750 RPM
Max Motor Torque	3.0 Nm	3.0 Nm	6.0 Nm	24.0 Nm	50.0 Nm	50.0 Nm / 44.0 Nm	70.0 Nm	137.9 Nm
EDrive Model	321.2208.1200 321.2208.2200	321.2208.1200 321.2208.2200	321.2212.2200 321.2212.4200	321.2214.2200 321.2214.4200	321.2216.2200 321.2216.4200	321.2218.2200 321.2218.4200	321.2220.4200	321.2220.4200 321.2220.4200
EDrive Rating	NEMA 4X							
Supply Voltage	1x120 / 3x240 V	1x120 / 3x240V	3x240 / 3x480V	3x240 / 3x480V	3x240 / 3x480V	3x240 / 3x480V	3x480V	3x480V
Power	0.75 kW	0.75 kW	1.5 kW	5.5 kW	5.5 kW	11.0 / 7.5 kW	15.0 kW	22.0 kW
Max Input Current	15.8 / 5.6 A	15.8 / 5.6 A	12.1 / 7.5 A	26.4 / 17.2 A	26.4 / 17.2 A	33.3 / 21.2	34.2 A	51.9 A
Max Output Current	4.3 / 4.3 A	4.3 / 4.3 A	10.5 / 5.8 A	24.0 / 14.0 A	24.0 / 14.0 A	30.0 / 18.0	30.0 A	46.0 A
Operating Temperature	14-122°F / -10-50°C							
Weight	84 lbs / 38 kg	99 lbs / 45 kg	142 lbs / 64.5 kg	208 lbs / 95 kg	264 lbs / 120 kg	357 lbs / 153 kg	385 lbs / 175 kg	652 lbs / 296 kg
Detailed Spec Doc No.	020.1211.0619	020.1212.0619	020.1213.0619	020.1214.0619	020.1215.0619	020.1216.0619	020.1217.0619	020.1218.0619

Capacity

AMCA Rating pending



ENERVEX Inc.
1685 Bluegrass Lakes Parkway
Alpharetta, GA 30004
USA

P: 770.587.3238
F: 770.587.4731
T: 800.255.2923
info@enervex.com
www.enervex.com

ENERVEX®
VENTING DESIGN SOLUTIONS