

3310 W. MAIN ST. IN HOUSTON, TX

Fireplace Design for Mixed-Use Commercial Office & Events

THE CHALLENGE

South Winstone is constructing a new 37,031 sq. ft. mixed-use commercial center for office and event space at 3310 W. Main St. in Houston, TX.

They engaged White Construction, Curtis and Windham, Windfohr Design, and Earthcore to spin up a 35ft $\frac{3}{4}$ " linear fireplace design that would common vent three chimneys into one flue.

Engineering a fireplace of this size was difficult, and availability of the EPS pipe was limited. Given these hurdles and a tight project schedule, no risk could be taken. Our reps at Earthcore specified ENERVEX products based on the availability and quality of our commercial chimney system and fan products, as well as our expert engineering assistance.

THE SOLUTION

The Isokern® fireplace design consists of ENERVEX's Powerstack EPS-1 [chimney and grease duct system](#) with two 18" diameter pipes on the far sides and one 22" in the center, combining into a single 22" diameter pipe with a complex and horizontal run. Due to the tight space, the original design called for the use of 90° Tees and elbows, but ENERVEX re-designed the system and used 45° Lateral Tees and elbows wherever possible to achieve a balanced system with much better flow.

We also implemented a custom-made plenum box, mounted at the chimney termination point, which provides support for the installation of an unlimited number of RS chimney fans. Here they are using two RS16 [high-temperature chimney fans](#) to disperse smoke horizontally. Installation is clean and easy — and the fan's compact design is barely visible from the ground level.

JOB PROFILE

Location:

- Houston, TX

Completion:

- May 2017

Owner:

- South Winstone, LLC

Contractor:

- White Construction Co.

Architect:

- Curtis and Windham, Windfohr Design

ENERVEX Rep:

- Earthcore / Isokern Fireplaces and Chimneys

THE RESULT

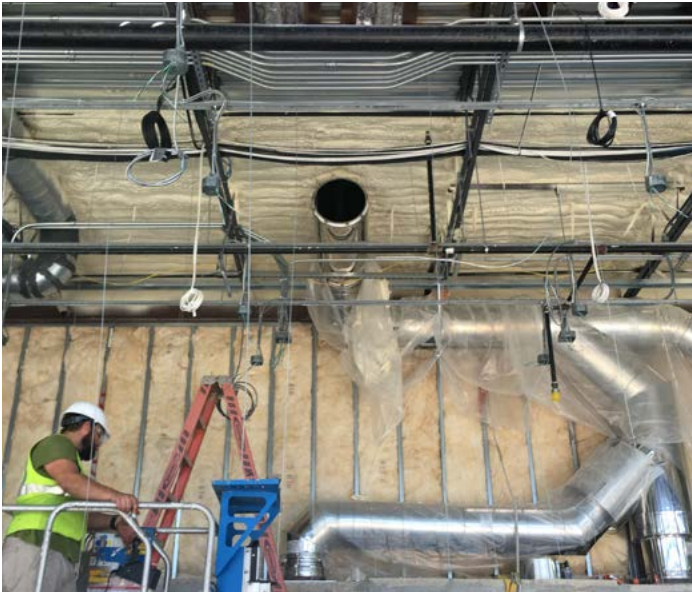
Despite the tricky fireplace design and in-project changes, Earthcore and ENERVEX were able to help the contractor complete an attractive and efficient mixed-use commercial fireplace design in a timely, professional manner.

According to Earthcore's Marketing Services and Product Development Manager David Montgomery, ENERVEX's superb engineering assistance and the high quality and reliability of our products are what enabled a smooth, on-time installation.



The RS16 Chimney fans and Powerstack EPS-1 system





The quality of ENERVEX's PowerStack contributed to an easy installation

"The run changed a bit during install," David said. "ENERVEX was able to ship additional pieces overnight to continue a successful chimney install."

This is the value of having a one-stop supplier. We stand by our custom venting designs and ensure that nothing gets in the way of your success. All components are designed to integrate, fit and perform together seamlessly, guaranteed. We are the only ones in the business true to that claim.

ENERVEX products installed:

- PowerStack EPS-1 [chimney and grease duct system](#)
- Common venting of three chimneys into one 22" flue pipe
- Custom plenum box
- Two RS16 [high-temperature chimney fans](#)

"Whether for commercial or residential use, ENERVEX has become the respected leader of mechanical draft systems and integrated venting design solutions in the industry. Their high-quality product is backed by outstanding customer service and support, which is why we proudly utilize their systems with our Isokern® Fireplaces."

- David Montgomery